



Delfin is different

CONTENTS

Welcome to Delfin	1
Accreditations	2
Destination: Dublin & London	3
Destination Dublin	4
Destination London	6
Delfin Learning	8
Methodology & Progress	9
Language Programmes	10
Specialist Programmes	12
Delfin Life	13
Accommodation	14
Dublin Social Programme	16
London Social Programme	17
First Week Dublin	18
First Week London	19
Year-Round Junior Programmes	20
How to Book	21

WELCOME TO DELFIN



Excellent
Teaching

Great
Atmosphere

Amazing Value
for Money

“People often ask me why I called my language school Delfin. I started in 2005 with the objective of providing students with a quality learning experience and great social environment, a place where students could learn English and make friends for life. Dolphins are known to be intelligent and sociable animals, so I thought they would be a good mascot for my school. Since then Delfin has gone from strength to strength and we now have year round schools in London and Dublin; Delfin is a global family now!

At Delfin we make a promise to our students: we’ll provide a fresh, contemporary environment in iconic locations and ensure you receive a complete student experience with quality teaching and great value for money. All of this is delivered with that unique and personal touch that makes us Delfin. What makes Delfin unique is the ‘Delfiners’ - you, our students, and our dedicated and passionate team. Come join us and find out why Delfin is Different.”

Gareth Butler, Founder

ACCREDITATIONS

There are many language schools in the UK and Ireland, so it's really important to choose an accredited language school for your English studies to ensure you have the best experience possible.

UK Accreditation

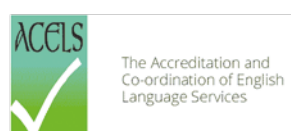
Delfin London is accredited by the British Council for the Teaching of English as a Foreign Language. This means that the school is regularly inspected by the British Council, which guarantees the quality of our teaching, administration, premises, resources, accommodation and welfare.

Delfin London is a member of English UK, the leading association for private and public language teaching establishments in Britain and we adhere to its code of practice.

Irish Accreditation

Delfin Dublin is accredited by ACELS QQI, an association for English language schools in Ireland. This means that we are regularly inspected by ACELS, which guarantees the quality of our teaching, administration, premises, resources, accommodation and welfare. Our courses are registered on the Interim List of Eligible Programmes (ILEP), which is a requirement for the recruitment of Non-EEA students.

Delfin Dublin is a member of Marketing English in Ireland (MEI), the leading association for private and public language teaching establishments in Ireland and we adhere to its code of practice. Membership of MEI provides our students with Learner Protection.



DESTINATION DUBLIN & LONDON



“I wanted to study English in a country with a quality education system, fascinating culture and amazing landscape.”

Talita

DESTINATION DUBLIN

DUBLIN HAS IT ALL

Dublin has it all, a charming mix of medieval, Georgian and modern architecture, a wealth of history and culture, a legendary literary tradition, wonderful shopping, dining, nightlife and of course fantastic characters! Throughout Dublin city and county you will find numerous attractions to discover and explore, from the internationally renowned cultural sites and museums to modern centres of entertainment. Whether your interest is sport, history, art or literature, whether you want to follow a heritage trail, visit a zoo, eat in a castle or follow in the footsteps of Dublin's many musical greats, there's something for everyone in Dublin!

Make sure to venture outside Dublin as well, to experience Ireland's breath-taking landscape. In the east of the country, the granite Wicklow Hills sit in contrast to the horse-grazing plain of the Curragh just a few kilometres away. In Connemara on the west coast, you can walk from beach to mountain, from seaweed-covered bay to lily-covered lough, in just a few hours. You'll see that Ireland's reputation as having some of the most beautiful and unique landscapes in the world is fully justified.

Dublin - The Facts

- The Vikings founded Dublin in 988 AD
- There are 1.66 million people living in the greater Dublin region
- There are no snakes in Ireland, this is supposedly to do with St. Patrick banishing them from the country
- There are over 1,000 pubs in Dublin
- Dublin's O'Connell Bridge is the only bridge in Europe which is as wide as it is long
- The Phoenix park is the largest urban park in Europe
- The prestigious "Oscar" statuette used at the Academy Awards was designed by Cedric Gibbons, who was born in Dublin in 1823
- The title of the novel 'Dracula', which was written by Dubliner Bram Stoker, is said to come from the Irish words "Droch Ola", which means "bad blood"
- Famous Dubliners include Bono, Colin Farrell and Oscar Wilde



DELFIN DUBLIN

Delfin Dublin is located in the heart of Dublin, beside the main thoroughfare of O'Connell Street and moments from the iconic Spire monument. You can reach the bustling Temple Bar within 10 minutes walk, historic Trinity College Dublin in 15 minutes and either of the city's main public parks – St. Stephen's Green or Phoenix Park, in 20 minutes.

Delfin Dublin - The Facts

- ✓ 33 bright and spacious classrooms
- ✓ General, Intensive, Examination and Business programmes
- ✓ Work study programmes available, and specialist long-stay courses
- ✓ Maximum class size of 15, average of 12
- ✓ Minimum age of 16
- ✓ Computer room, student lounge, study area, student café and library
- ✓ Free WiFi throughout the building
- ✓ Excellent social programme

Sights

- | | |
|---------------------------|--------------------------|
| ① Trinity College Dublin | ⑤ Temple Bar |
| ② The General Post Office | ⑥ Garden of Remembrance |
| ③ Christ Church Cathedral | ⑦ Old Jameson Distillery |
| ④ National Gallery | ⑧ The Luas Lines |



DESTINATION LONDON

ONE OF THE WORLD'S GREATEST CAPITAL CITIES

London offers you a truly epic living and learning experience. London's history stretches back over thousands of years, and the city boasts four World Heritage Sites: the Palace of Westminster and Westminster Abbey, the Tower of London, Maritime Greenwich and the Royal Botanic Gardens, Kew. London's world-class tourist attractions are renowned across the globe. Many of the most famous attractions are free to visit, for example the Tate Modern, National Gallery and the Victoria and Albert

Museum. About one third of London is devoted to parks and open spaces, so there are plenty of places to relax on fine days. Make sure you visit the Royal Parks as well as Hampstead Heath in North London, which offers amazing views over the city. London is also one of the world's best shopping destinations. Whether you head to the West End, Westfield Stratford City or a quirky London market, there's a huge range of places to buy gifts, fashion and food

London – The Facts

- London is the capital city of the United Kingdom and has a population of almost 8.5 million
- London is Europe's largest city and the 6th richest in the world
- London is home to some 300 theatres, 500 cinema screens and 12,000 restaurants
- London is home to 43 universities - the largest concentration of higher education in Europe
- London has hosted the Summer Olympic Games 3 times – in 1908, 1948 and 2012
- The Tube is the world's oldest underground train system, and celebrated its 150th birthday in 2013. 3.5 million passenger journeys are made every day on London's 'Tube' and there were more than 1 billion journeys in 2012
- The City of London is the oldest local authority in England and has governed the 'square mile' for about 700 years
- Famous "Londoners" include Kate Moss, David Bowie and Queen Elizabeth II



DELFIN LONDON

Delfin London is located on beautiful Bloomsbury Square, in the heart of Learning London. The school is just a ten minute walk from the shopping of Oxford Street, the night life of Soho and the West End, and the culture of Covent Garden – you couldn't be in a better place to enjoy all that London has to offer.

Delfin London - The Facts

- ✓ 14 bright and spacious classrooms
- ✓ General, Intensive, Examination and Business programmes
- ✓ Maximum class size of 15, average of 12
- ✓ Minimum age of 16
- ✓ Computer room, student lounge and study area
- ✓ Free WiFi throughout the building
- ✓ Excellent social programme

Sights

- | | |
|------------------------|------------------------|
| ① Holborn Tube Station | ⑦ Oxford Circus |
| ② The British Museum | ⑧ Piccadilly Circus |
| ③ Covent Garden | ⑨ Leicester Square |
| ④ The National Gallery | ⑩ The London Eye |
| ⑤ Trafalgar Square | ⑪ Houses of Parliament |
| ⑥ China Town | |



DELFIN LEARNING



“I needed to improve my English for my career, so took a 9 month intensive course in order to prepare for the IELTS exam.”

Bilal

METHODOLOGY & PROGRESS



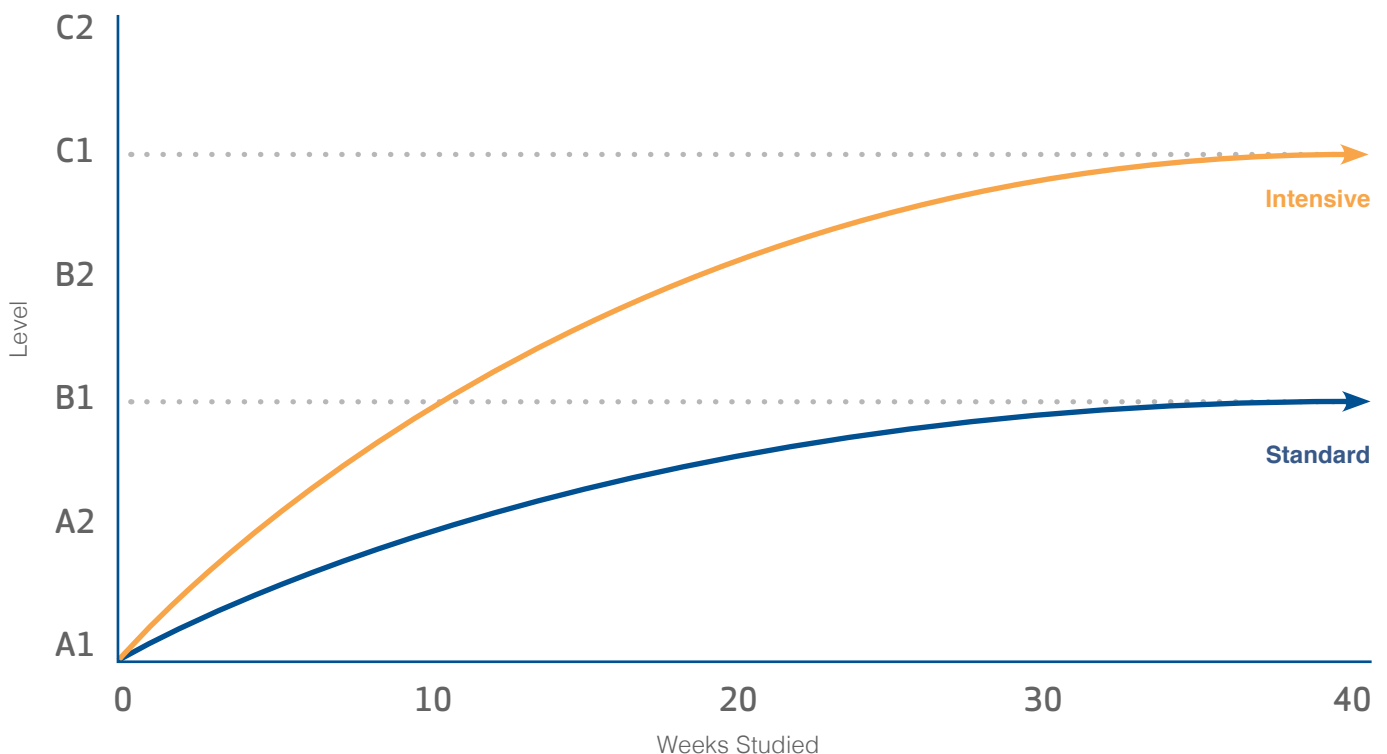
A message from the Academic Team

At Delfin English Schools we have the passion and experience to ensure you achieve your learning objectives, and our schools have a positive, friendly environment where your progress is central.

The academic success of our schools is a direct result of the teachers we employ and our approach to teaching. We carefully select quality teachers who understand your goals and work hard to build a close relationship with you. Your teacher will treat you as an individual and will find out why you're learning English and what you need to learn. As you learn, your progress will be continuously monitored so you can move to a higher level when you are ready, or we can give you extra support when you need it. All of this leads to a truly personalised learning experience, where your abilities will improve rapidly, and you'll have fun, too!

Your progress

Your progress will depend on your starting level of English, number of weeks studied and number of hours tuition per week. Our team is here to create the perfect learning pathway for you.



LANGUAGE PROGRAMMES

GE15

General English

Students on this course will be studying the four main skills of language – reading, writing speaking and listening – along with developing their grammar and vocabulary. The focus of all of our GE15 courses is to develop your communicative abilities and to activate your existing knowledge of English. Lessons are generally based on everyday topics and are active, task-based and relevant to daily life. Students have the choice of studying in the morning (GEM15) or the afternoon (GEA15). Students can start on a GE15 course every week.

Who should take this course?

GE15 is the best choice for students who want to combine learning English with exploring London or Dublin.

GE20

General English Plus

General English 20 is our most popular course, as it allows students to combine GE15 with an elective class. Students have the choice of taking GE20 in the morning or the afternoon. We have a variety of elective classes running throughout the year, including 'international communication', 'working in English', 'living in Britain', and 'writing skills'. In all of these elective classes students develop their skills through debates and discussions, role play, and class projects. Students can start the GE20 course every Monday.

Who should take this course?

GE20 is ideal for students who need to put an extra focus on their speaking skills for work, study or travel.

GE30

General English Intensive

Students who take GE30 will be placed into classes in the morning and the afternoon, every day, and will study for a total of 30 hours per week. The GE30 syllabus has been carefully designed to ensure that students on this course are studying as wide a range of topics and language as possible. Students can start on a GE30 course every week.

Who should take this course?

GE30 is ideal for students who want to maximise their learning while abroad.



"I need English for my job - I'm a model. I was quite nervous when I started, but I think the school's really friendly, and my conversation skills have really improved in the time I've been here."

Kristian, Czech



EX15

Examination Preparation

Exam Preparation at Delfin English School is a 15-hour English course, where students are placed into a focused Exam Preparation and practice class in the morning. Studying this English course combines level-specific language development with examination preparation, tailored to the international English examinations (Cambridge Language Assessment and IELTS). Students can start on an EX15 course every week.

Who should take this course?

EX15 is perfect for students who would like to prepare for one of the international English language examinations.

BUS20

Business Communication Skills

Business English at Delfin English School is a 20-hour course, where students are placed into a General English class in the morning, and then take a Business elective class for an hour afterwards. Studying this course combines level-specific language development with exposure to business situations and case studies. The objective of the programme is to give students the skills and linguistic tools for the workplace.

Who should take this course?

BUS20 is ideal for those who need to develop their business communication skills for the work place or further study.

Find your level

Your level	Which course?
C2 IELTS 7-8, TOEFL 95-110 TOEIC 901+, CAMBRIDGE CPE CEFR C2	Proficient You can use English with ease and fluency. Improve by increasing your understanding of the nuances of the language and engaging in independent reading to develop your vocabulary further.
C1 IELTS 6-7, TOEFL 61-94 TOEIC 528-750, CAMBRIDGE CAE CEFR C1	Advanced You can use English in a range of culturally appropriate ways. Improve by extending your vocabulary and refining your use of style and register.
B2 IELTS 5-6, TOEFL 36-60 TOEIC 528-750, CAMBRIDGE FCE CEFR B2	Upper-intermediate You can use English effectively. Improve by learning to discuss, argue and express opinion in a culturally acceptable way. Refine your use of grammar and vocabulary.
B1 IELTS 4-5, TOEFL 30-35 TOEIC 401-525, CAMBRIDGE PET CEFR B1	Intermediate You can speak English with some confidence. Improve by developing your fluency, your understanding of grammar and by widening your vocabulary.
A2 IELTS 3-4, TOEIC 301-400 CEFR A2	Pre-intermediate You can communicate in a range of everyday social and travel contexts. Improve by developing your speaking, grammar and vocabulary.
A1 IELTS 2-3, TOEIC 151-300 CAMBRIDGE KET, CEFR A1	Elementary You can understand language used in everyday situations if the speaker speaks slowly and clearly. Improve by developing your listening and vocabulary.
A0 IELTS 1-2 TOEIC 0-150	Beginner You can speak and understand English in a very limited way.

SPECIALIST PROGRAMMES

ONE-TO-ONE CLASSES

The English course content is entirely up to the student, depending on their level of English and learning objectives. We will have the student do an online test before arrival and ask which areas of study should be covered. We can then design a bespoke English programme to satisfy these needs. Students can book anything from 1 hour and up.

INTERNSHIP PROGRAMME (EEA CITIZENS)

Joining the Delfin internship programme is a great way to improve your English and get some valuable work experience at the same time. Students on our internship programme start by taking a GE20 course at one of our schools, before moving on to their work placement. The internship itself generally lasts between 3-6 months, and can be with a variety of industries; many students find placements in the hospitality sector. Delfin will work closely with you to select the company where you will do your placement, based on your previous work experience and interests.

ACADEMIC YEAR PROGRAMMES (IRELAND)

Students on Academic Year Programmes are integrated in with students on the General English 15, 20 or 30 courses, in the morning or afternoon, depending on the number of hours per week booked. Part of the course programme will be examination preparation, as non-EEA students are required to take one of the internationally recognised English language examinations when enrolled on long-stay (25 week+) courses in Ireland. Once students have entered Ireland they will be required to register at the immigration office in Dublin and open an Irish bank account - Delfin will assist with all aspects of this process.

MULTI-CENTRE COURSES

Both Dublin and London are fantastic cities, and it can be difficult to know which one to choose! With Delfin you don't need to make a decision – why not take part of your academic programme in both! All of our academic programmes are also offered on a multi-centre basis, so you can spend time in London and Dublin. Alternatively, you can combine different courses – why not start with a GE30 course in London to really develop your English, and then move to Dublin for a Work and Study programme to practice what you've learnt?

DELFIN LIFE



“I feel really at home here. I met
and learned how to live with
people from all over the world,
I’ll never forget this experience!”

Thayse

ACCOMMODATION



A welcome from our Accommodation Team

Your accommodation is a really important part of your experience when studying abroad. There are lots of different options available, depending on what you would like. Some students like to stay with a host family, so they can be more integrated with the local culture. Others like our house shares – it's becoming a really popular choice! – where they share a house or apartment with other language students. You can also choose one of our residences, which are usually blocks of rooms or apartments, with students sharing facilities, like in university. Even if you intend to find your own accommodation, it's a good idea to book at least a few weeks accommodation with the school at the start of your programme, to make sure you have somewhere to stay when you arrive in the country. Speak to the accommodation managers in our schools to arrange accommodation, or if you need assistance with anything – it's our pleasure to help.

Accommodation Key



Available at Delfin London



Single



Private bathroom available



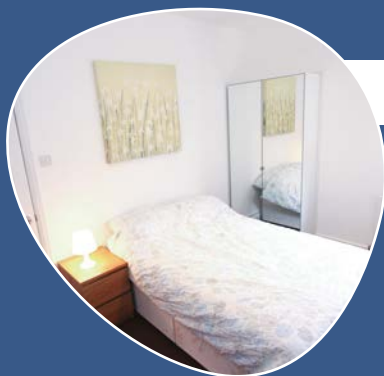
Available at Delfin Dublin



Shared



Catered option available



HOMESTAY ACCOMMODATION

For many students studying abroad, a large part of their experience is coming into contact with the local culture, and the best way to do this is to stay in our homestay accommodation. Generally located outside the city centre, homestay can offer you a number of options, including single or shared rooms, half or full board and en suite or shared bathroom. You can even choose one of our "executive" homestays, which are located closer to the school.



RESIDENTIAL ACCOMMODATION

The residence is perfect for students who would like to live in university style accommodation, where students live in large blocks of apartments, with shared cooking and socialising facilities. We have a variety of residential accommodation available in London and Dublin, to suit your specific requirements. In London, the distances from the school range from 20 to 45 minutes journey time, and again students can choose to have a private bathroom if they wish.





“I chose to stay in a homestay so I could get to know the local culture better. I really like my host family - they are thoughtful, kind and very friendly.”

Francesca, Italian



APARTMENT/HOUSE SHARE ACCOMMODATION

Fancy having your own space, and a bit more independence, while having the opportunity to live with students from all over the world? If yes, then our apartment or house shares are the perfect accommodation type for you. Shared cooking facilities mean that you can enjoy meals together, while also having the freedom to explore your new home. With all bills except clothes washing facilities included, this is a really convenient option.



HOTEL/HOSTEL ACCOMMODATION

If none of the above suit your needs, then we can provide you with recommendations for a wide range of hostel or hotel accommodation to fit any budget – ask our accommodation staff for more details, please note that prices vary according to the season.



DUBLIN SOCIAL PROGRAMME



At Delfin Dublin we want to make sure you get the most out of your time with us – this means that you will improve your English, learn about Dublin and Ireland’s unique culture and history, and of course have a great time as well! There are so many exciting sights and activities in Dublin, you’ll never be bored – my favourite cultural sights are the Chester Beatty Library and Trinity College Dublin. Make sure not to miss out on the live music scene in Dublin, it’s one of the best and most varied in Europe. There are many great venues and you can see everything from Irish Traditional Music to cutting edge funky house tunes, all in the same evening!

MONDAY

National Archaeological Museum

Go back in time and discover treasures, such as pre- historic gold and other wonders!

Welcome Drinks & Walking Tour of Dublin

Explore Dublin up close with our free walking tour.

TUESDAY

Old Jameson Distillery

Find out where John Jameson made his famous whiskey.

Abbey Theatre

Visit Ireland’s national theatre. This innovative theatre feature works from new Irish writers and artists.

WEDNESDAY

Kilmainham Gaol

Explore one of the largest unoccupied jails in Europe and learn about Ireland’s history between 18th and 20th centuries.

THURSDAY

Chester Beatty Library

The lonely planet describes the library ‘as not just the best museum in Ireland, but one of the best in Europe.’ This is a must- see.

Temple Bar

Experience a bustling nightlife and cultural delights at Dublin’s Temple Bar.

FRIDAY

Trinity College

Visit one of the greatest universities in the world.

Delfin Pub Night

Relax after classes and meet new friends at our local pub.

SATURDAY

Day trip Giants Causeway & Belfast City

SUNDAY

Day trip to Galway & The Cliffs of Moher

LONDON SOCIAL PROGRAMME



One of the biggest problems when coming to London is deciding what you will see and do – there's so much in and around London! Joining the Delfin social programme should make this a bit easier for you – you can get a taste of all the things London has to offer. As well as seeing the famous sights, such as Buckingham Palace and the Houses of Parliament, try to visit some areas outside the centre, like trendy East London, or Greenwich. Also, make sure you travel outside London, too – there are so many wonderful and historic cities, for example Oxford and Stratford upon Avon, and the English countryside is truly beautiful.



MONDAY

Shakespeare's Globe Theatre

Experience one of Shakespeare's plays as people did in the Elizabethan period.

Welcome drinks and orientation tour!

All new students are welcome. Meet at 5:15pm outside Delfin.

TUESDAY

East London Walking Tour

Discover the London you won't find in guidebooks. Explore the capital's cultural and creative hub.

Coronet cinema night

Come and enjoy a film at one of London's oldest Victorian theatres. It was made famous when it appeared in the film 'Notting Hill'.

WEDNESDAY

National Gallery

Featuring 2,000 works, from Monet's water lily paintings to one of Van Gogh's 'Sunflowers' series.

Science Museum Late!

Get your culture fix after hours at the capital's top museum. Not only do you have all the exhibitions and interactive galleries to yourself, but you can enjoy the regular gigs, pub quizzes, comedy shows and a silent disco.

THURSDAY

Camden Market

Discover alternative London at our favourite market! You can find everything from vintage fashion to second hand music and books.

FRIDAY

British Museum

At Delfin we are only a 3 minute walk from one of the world's oldest and most prestigious museums.

Delfin Pub Night

Relax after classes and meet new friends at our local pub.

SATURDAY

Day trip to Cambridge

Explore this iconic city with a day trip to Cambridge!

SUNDAY

Day trip to Bath & Stonehenge

In one trip visit England's most famous Roman Town, Bath and the world famous, Stonehenge.

FIRST WEEK DUBLIN

Student Profile

Name: Edoardo Boeri

Age: 21

Occupation: University Student

Course: 2 weeks, G30



Monday

I'm doing an intensive course while I'm in Dublin as I'm on my Summer holidays from university. I don't get a chance to speak English that much in Italy; it was great to arrive in my class and go straight into a group speaking exercise! The teacher is great, so I've started to relax already.

Tuesday

Dublin has lots to offer in terms of culture and history, so I'm looking forward to getting out and taking loads of pictures - it's my hobby. Today we worked on academic writing in class - classes here are really varied.



Wednesday

Yesterday was amazing - a big group of students all went to Howth for the afternoon with a Delfin staff member. Dublin's on the sea - it's a really beautiful environment to be in. I love getting to know the other people in the school - it feels like you're joining a family when you study at Delfin.

Thursday

I want to talk about my accommodation - it's been great! Because I'm not in Dublin for too long, and haven't visited the country before, I chose to stay with one of Delfin's Homestays. It's been amazing so far - a great chance to get to know Irish culture better, and I've been practicing my English every evening! Delfin also has residential accommodation, but Homestay is the right choice for me.



Friday

I can't believe it's the end of my first week - it's flown! The intensive study option has been great, I really think I'm making fast progress and also making friends for life. I got the best score in the class test today (yay!) so I was given a Delfin Dollar - these are the school's "currency", and I can use it to get myself a free drink in the school's partner pub tonight!

A couple of my classmates are finishing today and have received their certificates - I look forward to getting mine next week. I've already decided that I'm going to come again next year for a longer course, and prepare for the Cambridge Advanced Exam - wish me luck!

FIRST WEEK LONDON

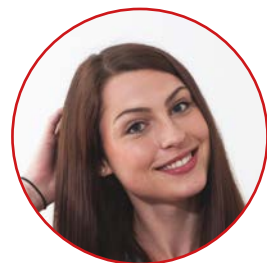
Student Profile

Name: Christina Zeiger

Age: 23

Occupation: University Student

Course: 12 weeks, G20



Monday

I arrived at Holborn tube station this morning at 8.40 to start my learning journey! I'm here for 12 weeks before I start onto a masters programme in Business Management. It's through English so I want to get my level as high as possible. I'm a bit nervous, but excited - it's my first time in London.

Tuesday

My first day was great, and action-packed! I had a speaking and writing test before I started my classes - I'm in Upper Intermediate level. There's students from all over the world in my class - Italy, Spain, Brazil, Turkey, France, Switzerland, and a few others as well. I love the atmosphere in the school - professional but relaxed, the staff are really friendly!



Wednesday

The location of the school is amazing - I can walk to all the most famous things in London, like Buckingham Palace, the London Eye, Oxford Street and the Houses of Parliament. We have a visit to the British Museum on the social programme today - I'm excited about seeing the Rosetta Stone!



Thursday

There are many iconic things about London - The Queen, The Beatles, drinking tea and red telephone boxes! I come from a small city in Germany, so to be in such a cosmopolitan environment is really eye-opening - my perspective on the world is changing. Tonight a group of students are going to a pub - another icon of British culture!



Friday

We had such a great time last night! Along with improving my English - classes are dynamic, and we are covering all the skills of English - I've already started to make friends from all over the world. After class today Vincenzo - he's in my class - and I are going to make some plans for the weekend - I think we'll visit Oxford or Cambridge, on one of the trips that Delfin organises every weekend. Such an amazing first week!



YEAR-ROUND JUNIOR PROGRAMMES



DELFIN ENGLISH SCHOOL

Delfin English School is delighted to offer year-round closed-group courses in both our London and Dublin centres. Both schools are in ideal city centre locations, and so school groups can take advantage of all that Dublin and London have to offer. Programmes can be tailor-made to the specific needs of the group, and can take place any time throughout the year*

Delfin gives you:

- Excellent teaching – We are British Council and ACELS accredited
- Great locations – Our schools are in the centre of London and Dublin
- Tailor made academic and social programmes
- Great value for money

Below is a sample timetable

	Sunday	Monday	Tuesday	Wednesday	Thursday	Friday	Saturday	Sunday
Morning		Induction & placement test	Tuition (3 hours)	Tuition (3 hours)	Tuition (3 hours)	Tuition (3 hours)		
Lunch	Arrival in UK and transfer for Host family	Packed Lunch	Packed Lunch	Packed Lunch	Packed Lunch	Packed Lunch	Full day excursion with packed lunch	
Afternoon		Orientation tour	Cultural Visit	Sports afternoon	Cultural visit			Student departs
Dinner	With Family	With Family	With Family	With Family	With Family	With Family	With Family	
Evening	Free Evening	Free Evening	Free Evening	Free Evening	Free Evening	Free Evening	Free Evening	

Contact us for further details

Delfin London - information@delfinschool.com | Delfin Dublin - info@delfin.ie

HOW TO BOOK

Booking a course at Delfin is easy, and we are here to help you every step of the way. Whether you book online, by phone or in person, our friendly staff will make the process as simple as possible.



Online

Book or enquire about a course by using our online application form:

For London www.delfinschool.com/en/london/apply

For Dublin www.delfinschool.com/en/dublin/apply



Email

Email your enquiry, and we will aim to answer you within 24 hours.

For London information@delfinschool.com

For Dublin info@delfin.ie



Call Us

Office hours in Dublin and London are 09:00 to 18:00, so please feel free to call us to have a chat about the programme you would like to study.

For London +44 (0) 207 8313 380

For Dublin +353 (0) 1 872 2037



Visit Our Schools

If you are already in London or Dublin and would like to speak to someone face to face to discuss your study options, please come visit the schools! You don't need to make an appointment, and our offices are open from 09:00 to 18:00.



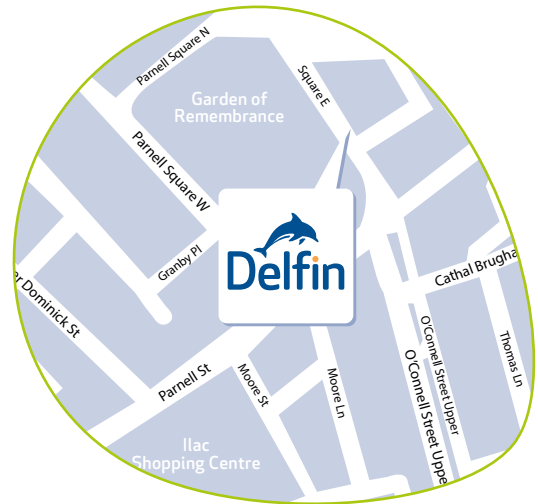
Contact Your Local Agent

Many students feel more comfortable having a local agent in their home country advise them on their studies abroad. Delfin is proud to have agent partners from all over the world – if you don't have an agent, and don't know your local agents, get in touch with us and we can advise you.



Delfin English School London

T +44 (0)207 831 3380
E information@delfinschool.com
W www.delfinschool.com/london






Delfin English School Dublin

T +353 (0)1 872 2037
E info@delfin.ie
W www.delfinschool.com/dublin

Delfin is different

Find us on:

-  **Facebook** - www.facebook.com/delfinenglishschool
-  **Instagram** - www.instagram.com/delfinschool
-  **Twitter** - www.twitter.com/delfinschool
-  **YouTube** - www.youtube.com/user/delfinenglishschool